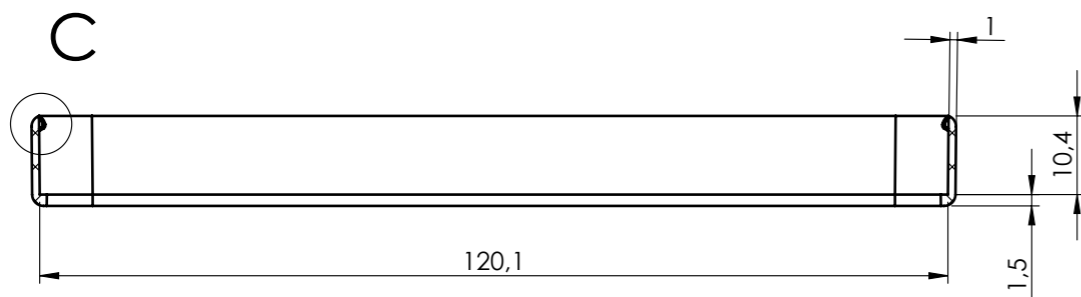
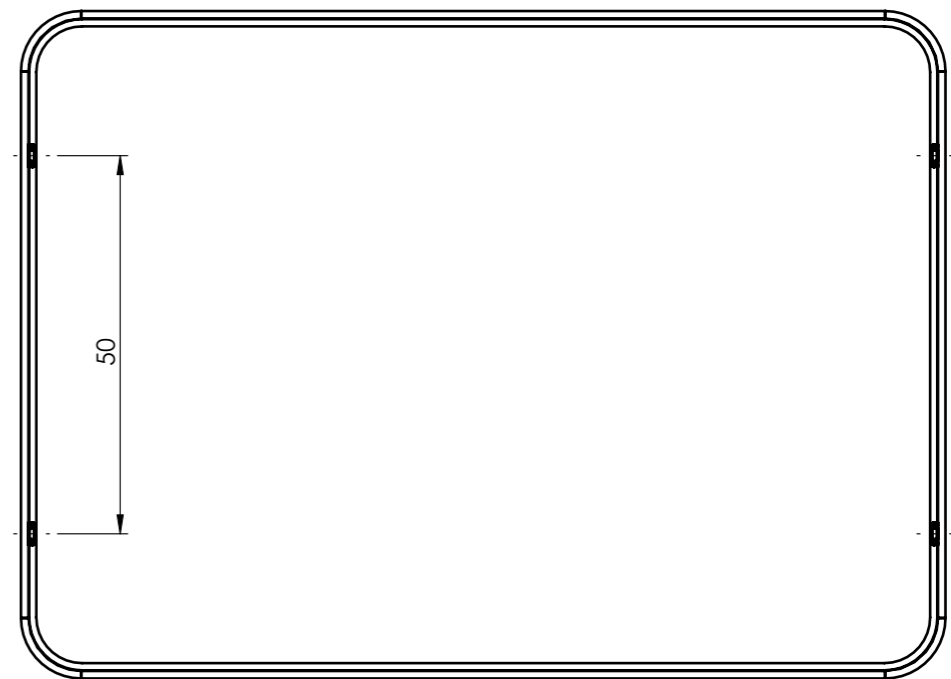
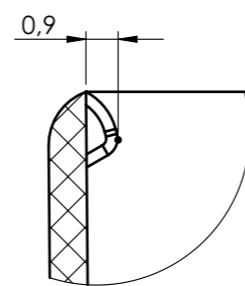


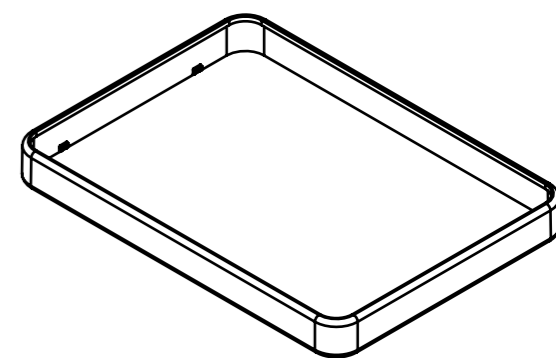
SECTION A-A



SECTION B-B



DETAIL C
SCALE 5 : 1



General information:
 - Workpiece zero point for mechanical processing
 - Minimum recommended radius for machining = R1.0 mm

| General Tolerance UNI EN 22768/1 Media (m) | | | | | Sheet: |
|---|---|--|-------------------------|------------------------------------|--------------------------|
| from 0.5 to 3 ± 0.1 | from 3 to 6 ± 0.1 | from 6 to 30 ± 0.2 | from 30 to 120 ± 0.3 | from 120 to 400 ± 0.5 | 1 |
| Scale: 1:1 | Drawn: R.N. | Checked: R.N. | Date: 01/03/2023 | Material: ABS | Process: INJECTION |
| Dimension in mm | The present drawing cannot be reproduced or communicated to 3rd parties, even partially, without the authorization of ITALTRONIC S.p.A. Italtronic reserves to protect its own rights according to the law. | | | Weight: 5.12 gr | Cod. Mold: ST.1400220 |
| italtronic enclosures for electronics italtronic.com | | Description: ANELLO ITOUCH ISHAPE H10 RING ITOUCH ISHAPE H10 | | Drawing nr.: 2_010_00043 | Rev.: 00 A3 |