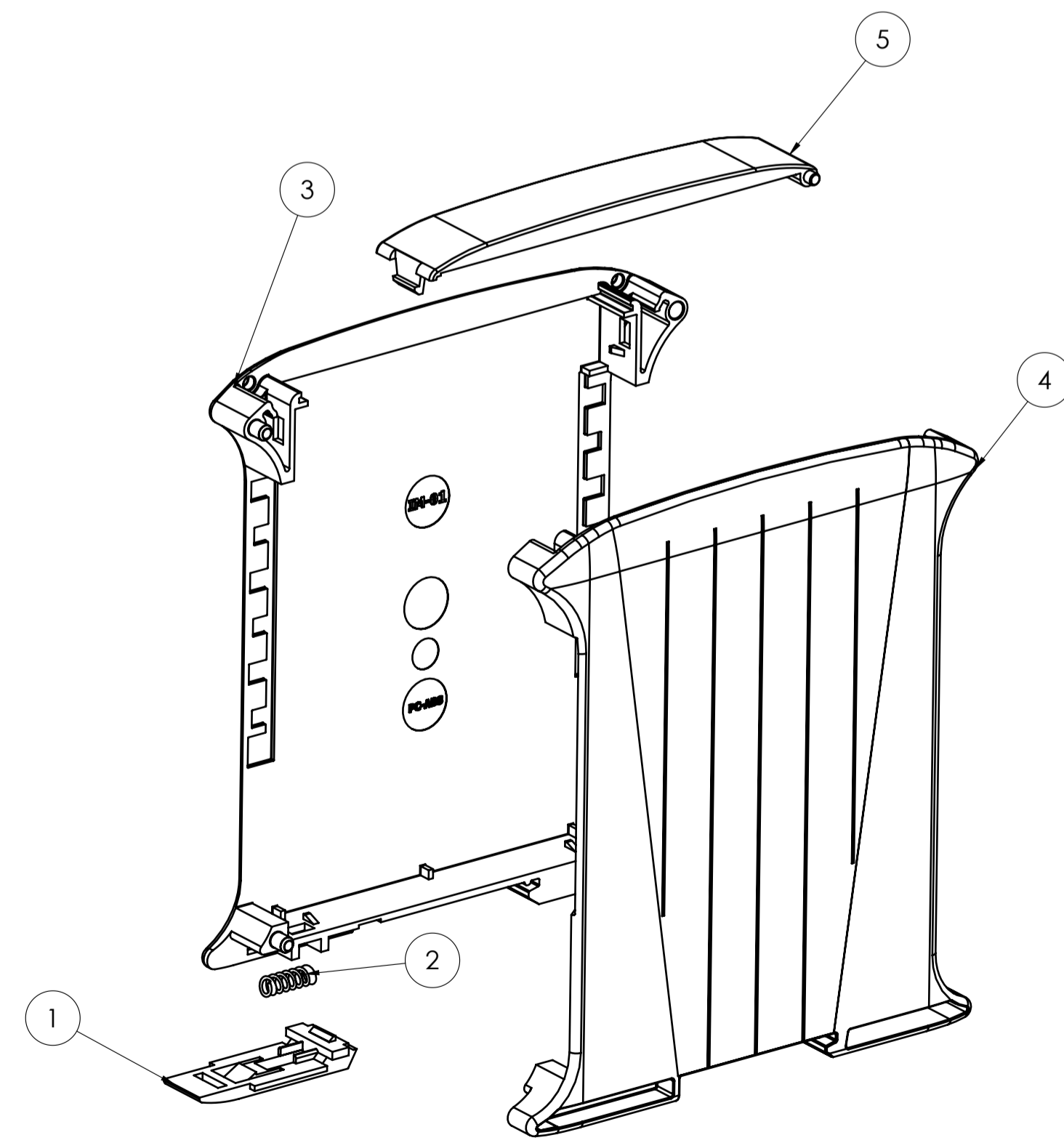
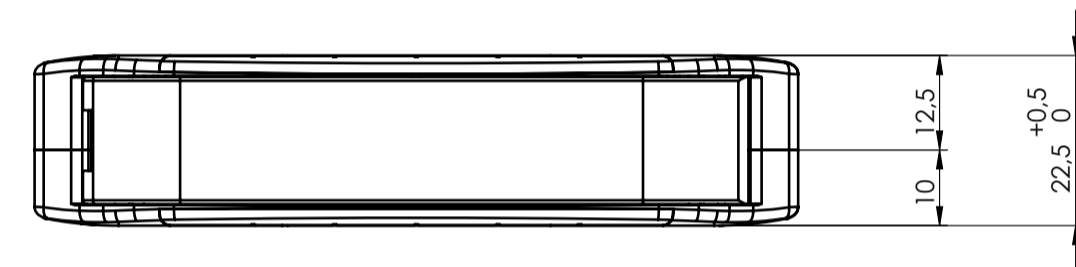
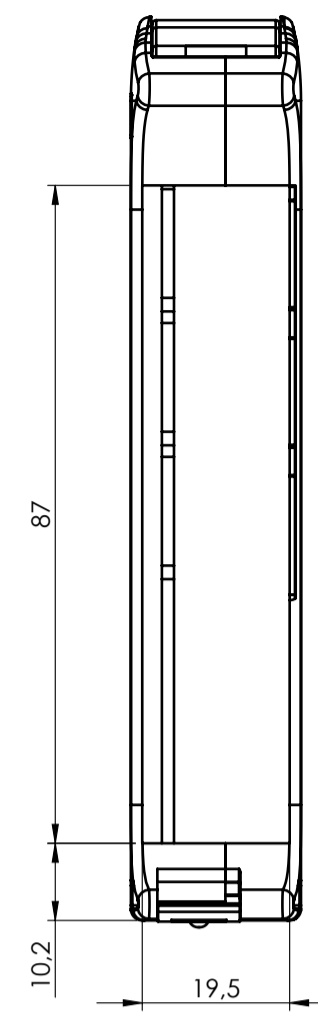
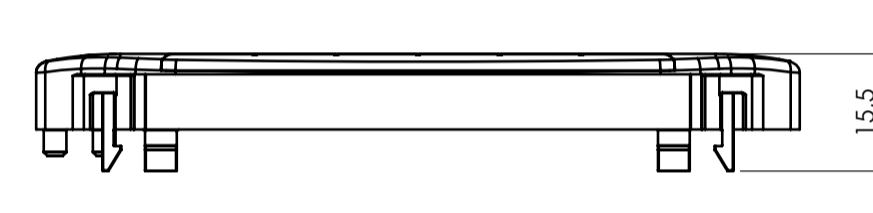
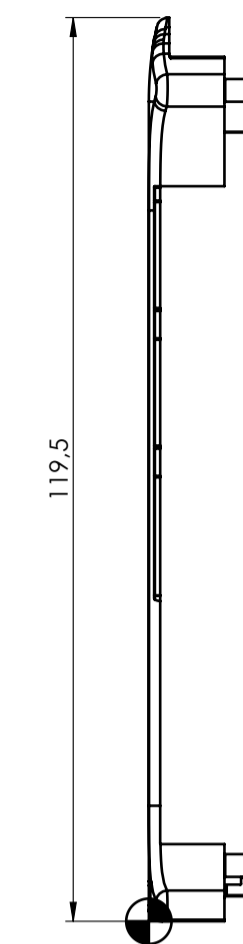
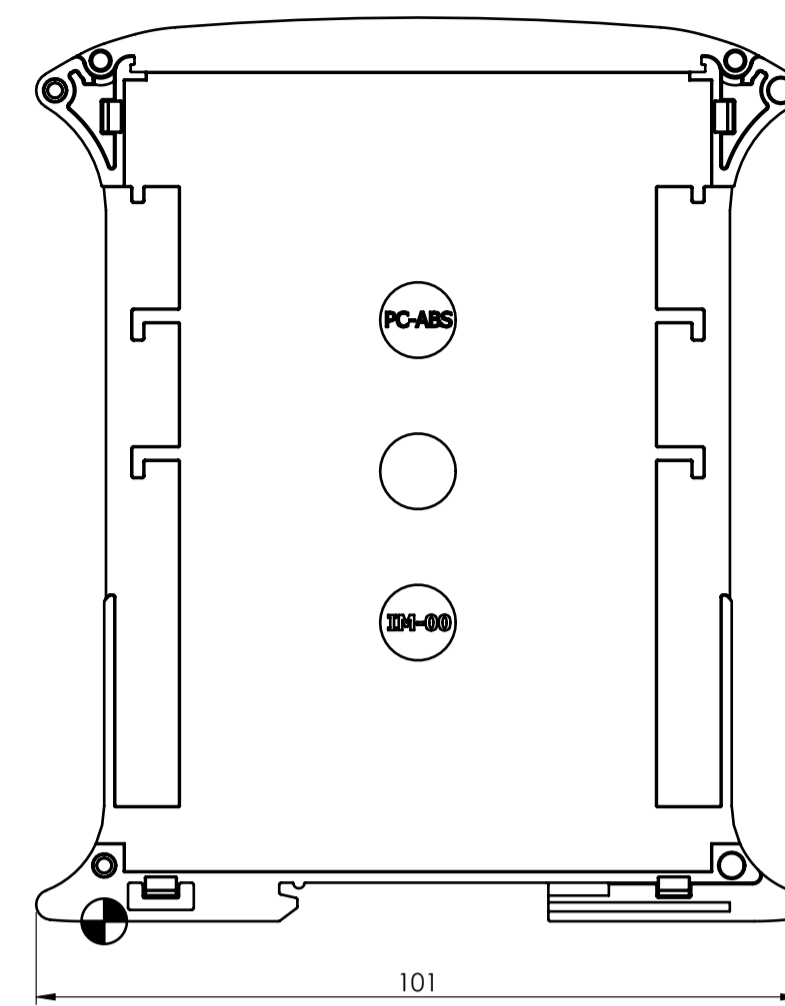


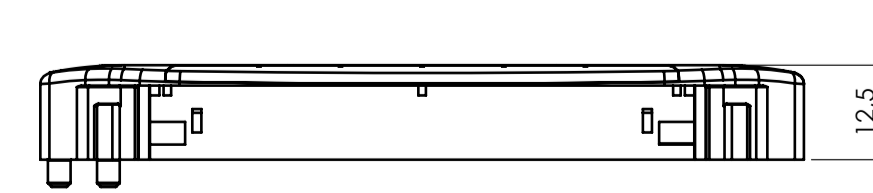
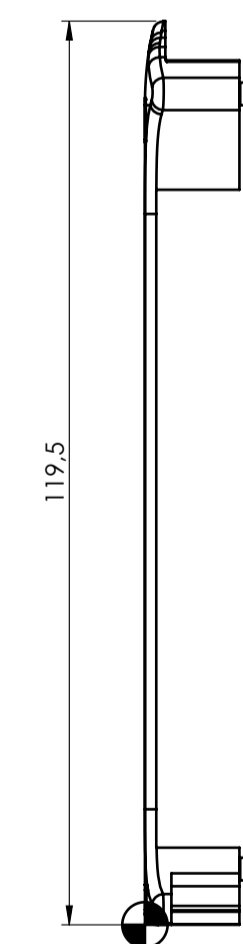
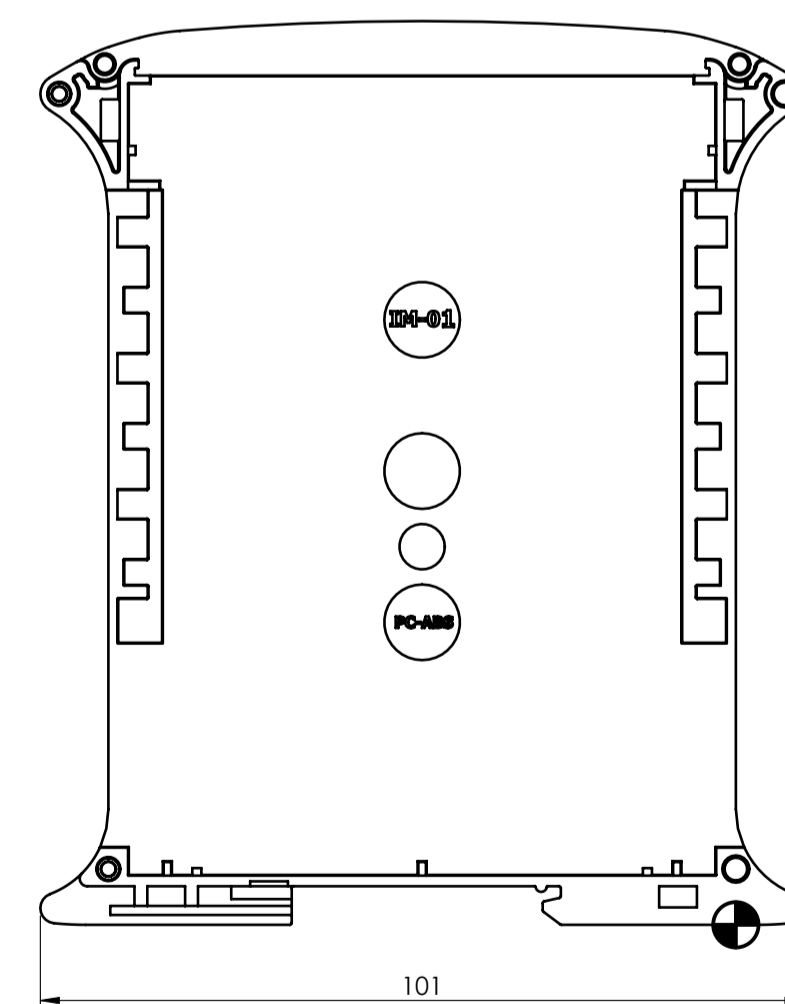
SECTION A-A



COVER RAILBOX

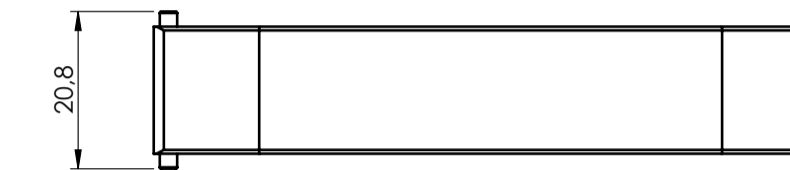
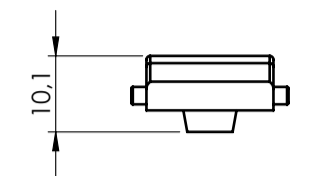
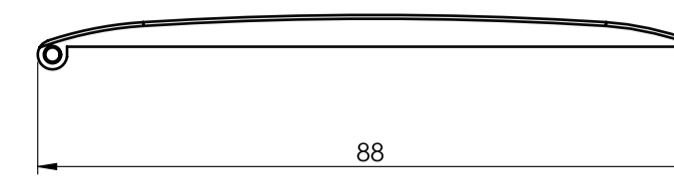


BASE RAILBOX

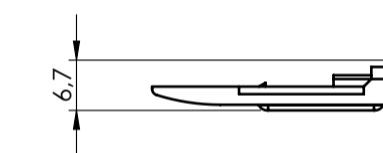
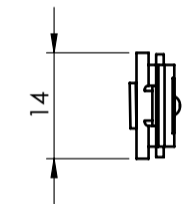
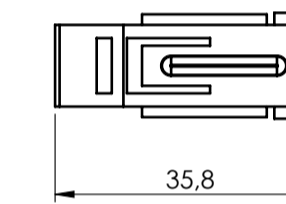


General information:
 ● Workpiece zero point for mechanical processing
 - Minimum recommended radius for machining = R1.0 mm
 - Mounting rail like EN 60715; TH 35-15
 - Recommended PCB outline on www.italtronic.com

HINGED PANEL

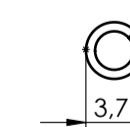
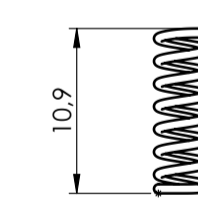


HOOK



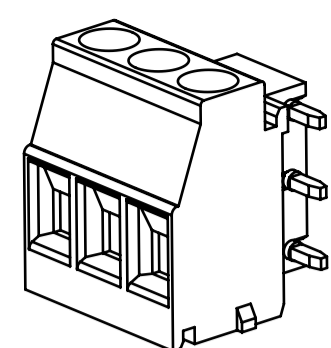
SPRING

2:1

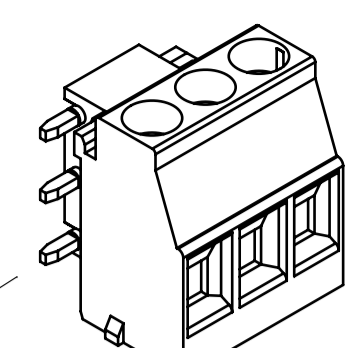
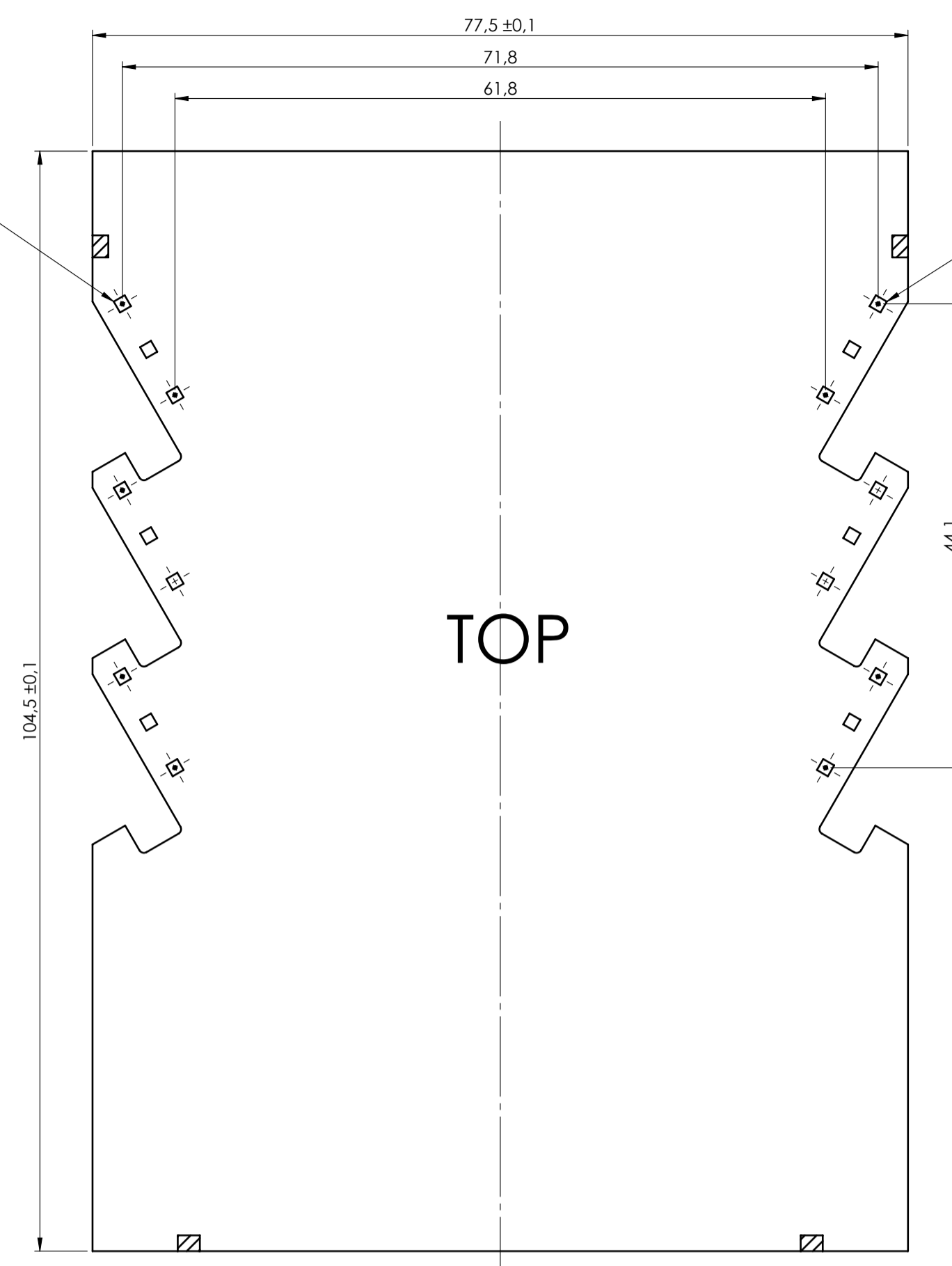


RIF.	Q.TY	DRAWING	DESCRIPTION
1	1	2_110_00032	HOOK RAILBOX
2	1	2_110_00011	SPRING FOR HOOK RAILBOX
3	1	2_110_00033	BASE RAILBOX 12.5 MM 3L
4	1	2_110_00089	COVER MULTILEVEL RAILBOX 10 MM 3L
5	1	2_110_00072	FRONT HINGED TRANSPARENT PANEL 17 MM
6	2	2_110_00002	MULTILEVEL HORIZONTAL HOLE COVER BREAKABLE FOR 22.5MM ENCLOSURE

General Tolerances (Ref. EN 22768/1 - Media 1H)				Sheet:	
from 0.5 to 3	from 3 to 6	from 6 to 30	from 30 to 120	from 120 to 400	
±0.1	±0.1	±0.2	±0.3	±0.5	1
Scale:	Drawn:	Checked:	Date:	Material:	Process:
1:1	R.N.	R.N.	25/02/2022		
Dimension in mm		Replaces the:	Derived from:	Weight:	Cod. Mod:
		R-03441-00	--	gr	--
		Description: KIT CONTENITORE RAILBOX MULTILEVEL 22.5MM KIT ENCLOSURE RAILBOX MULTILEVEL 22.5MM			
italtronic.com		Drawing n°: 3_110_00014		Rev: 0 A1	

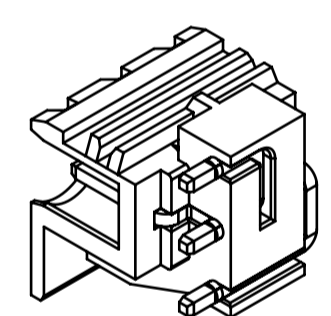
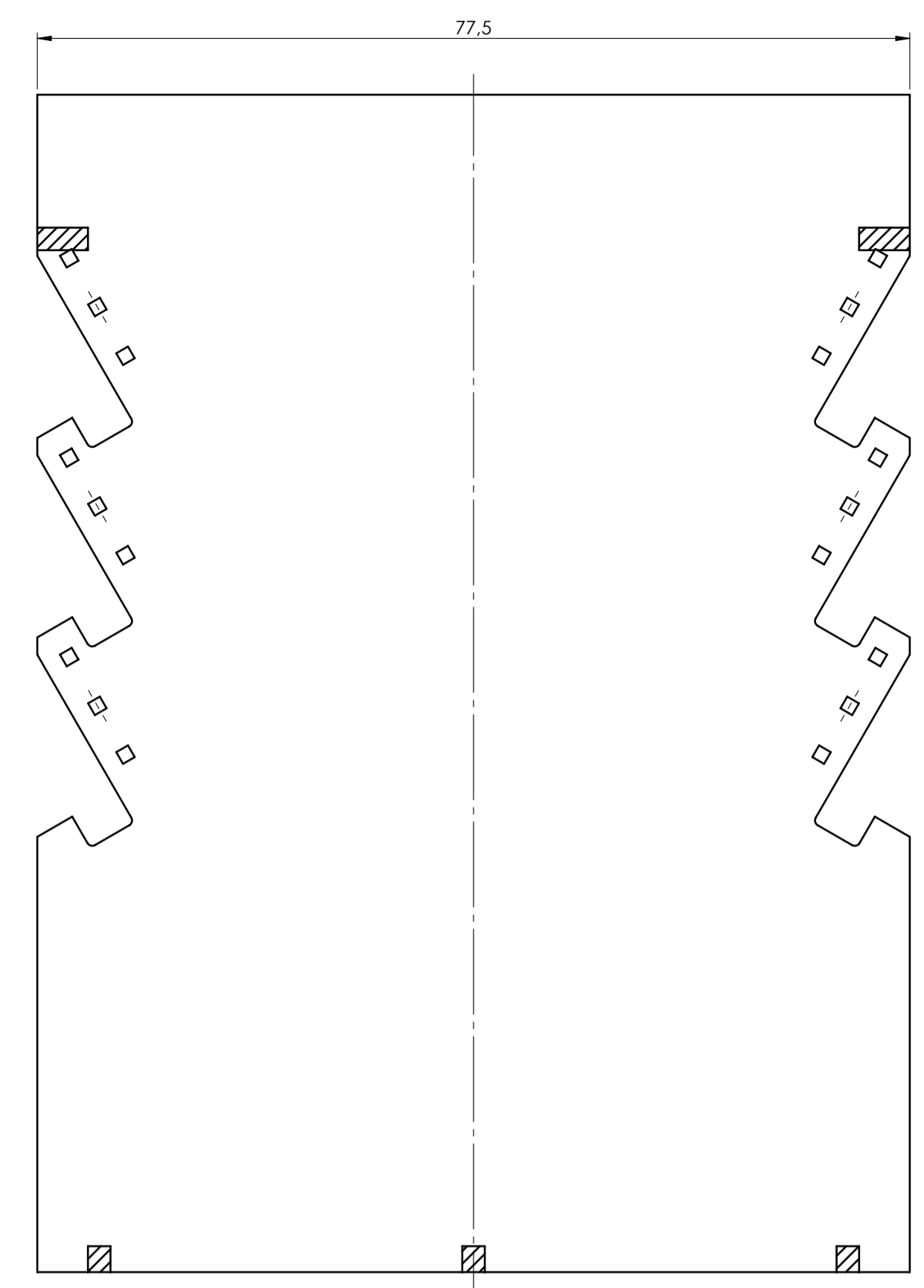
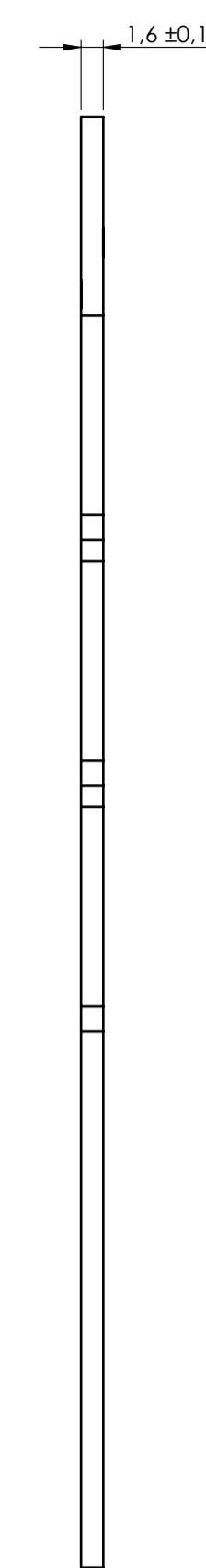


5ES-3PR

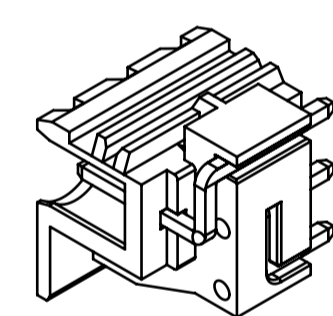
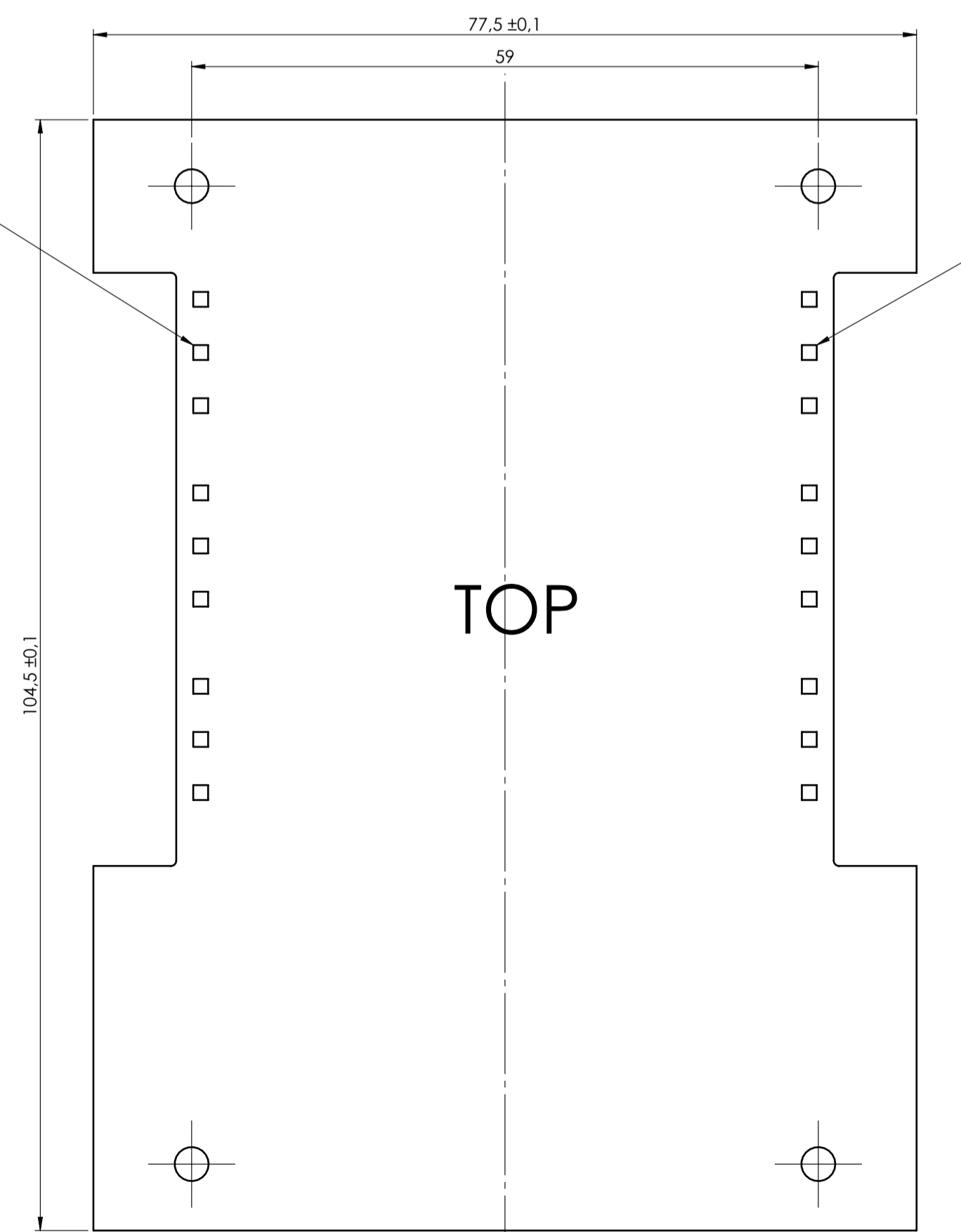


5ES-3PL

PCB V FIX

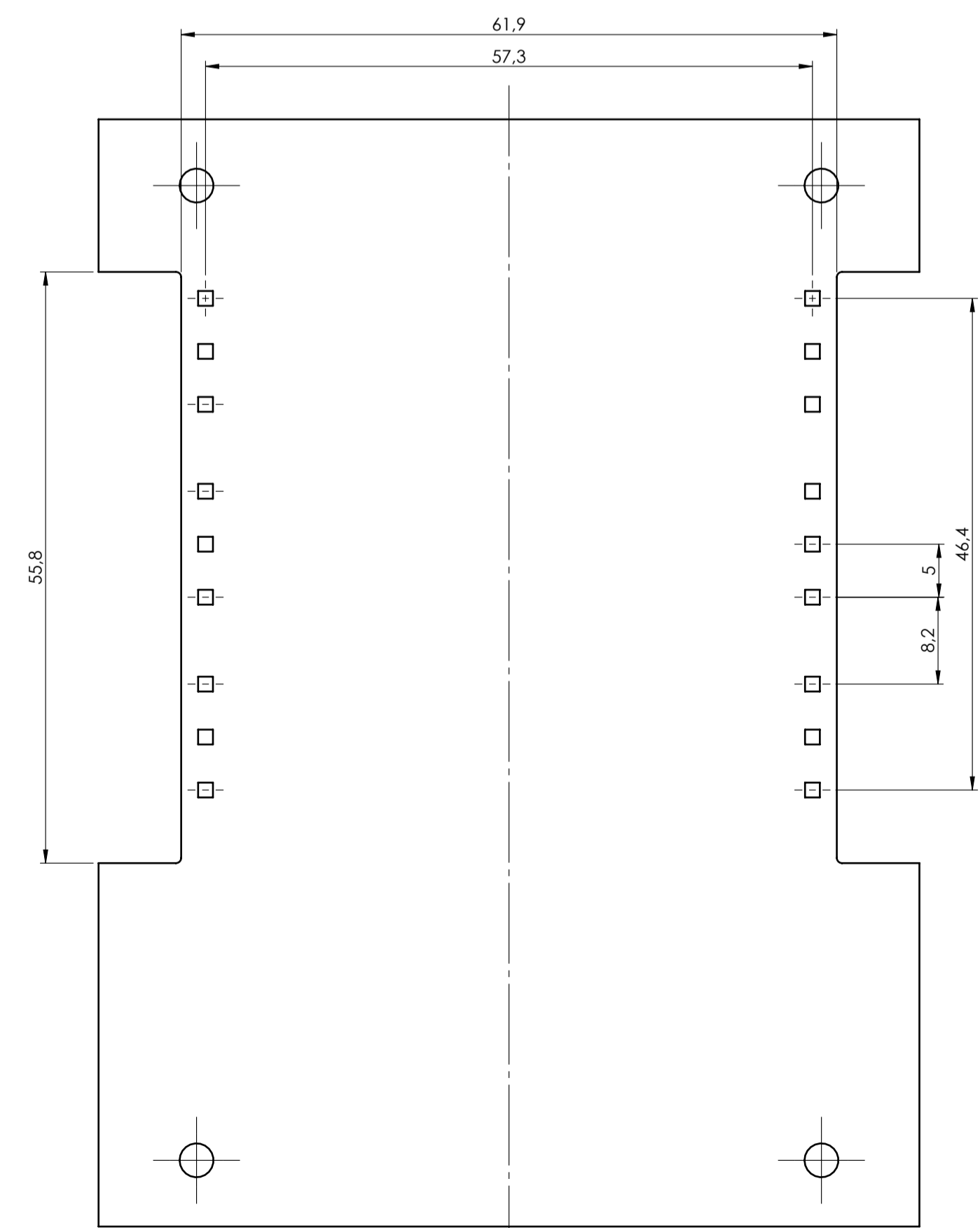
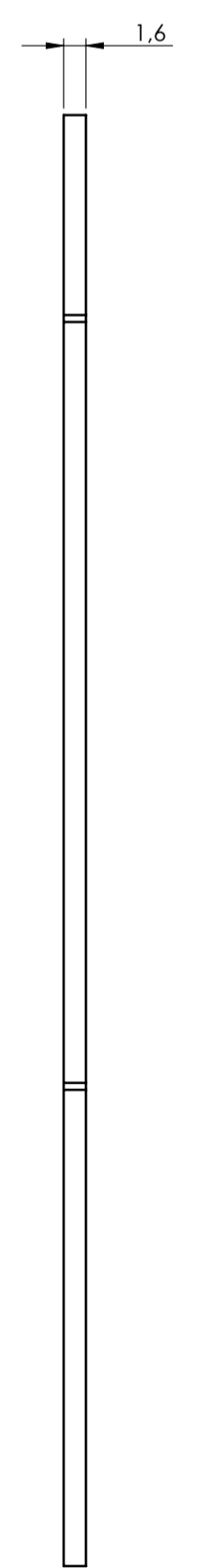


PRESA 5EH-3PR



PRESA 5EH-3PL

PCB V PLUG-IN



General Tolerance UNE EN 22768/1 Media (m)				Sheet:	
from 0.5 to 3	from 3 to 6	from 6 to 30	from 30 to 120	from 120 to 400	PCB
±0.1	±0.1	±0.2	±0.3	±0.5	Process:
Scale: 1:1	Drawn: R.N.	Checked: R.N.	Date: 25/02/2022	Material:	Weight: gr
Description: KIT CONTENITORE RAILBOX MULTILEVEL 22.5MM KIT ENCLOSURE RAILBOX MULTILEVEL 22.5MM				Cod. Mod: --	
Italtronic enclosures for electronics italtronic.com				3_110_00014	
				Rev: 0 A1	

NO COMPONENTS AREA